

**MEMPHIS POLICE DEPARTMENT
Blue C.R.U.S.H.™ TRAC**

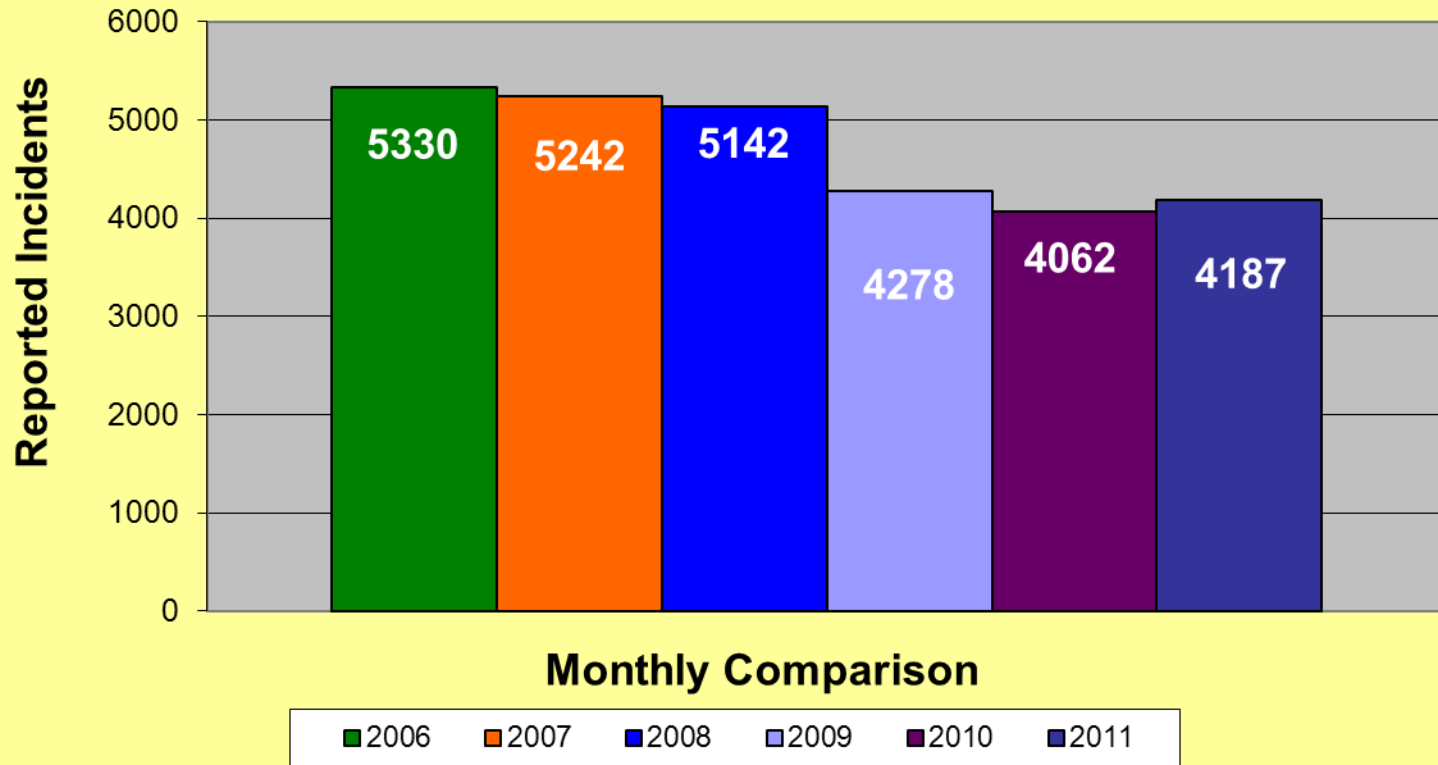
YEAR TO DATE

| Total Part I Crime | | | | | | | | | | | | |
|--------------------------------|------------|------------|------------|------------|------------|------------|------------|------------|------------|------------|------------|------------|
| | Jan | Feb | Mar | Apr | May | Jun | Jul | Aug | Sep | Oct | Nov | Dec |
| 2006 | 5576 | 4267 | 5376 | 5682 | 6245 | 5746 | 6147 | 6507 | 6086 | 5733 | 5330 | 5260 |
| 2007 | 4920 | 3978 | 5194 | 5445 | 5983 | 5671 | 6185 | 5732 | 5358 | 5377 | 5242 | 5478 |
| 2008 | 5040 | 4144 | 5072 | 5518 | 5847 | 5543 | 6016 | 5618 | 5673 | 5519 | 5142 | 4939 |
| 2009 | 4519 | 3687 | 4652 | 5141 | 5186 | 4802 | 5382 | 5004 | 4725 | 4703 | 4278 | 4070 |
| 2010 | 3508 | 2970 | 3823 | 4270 | 4637 | 4582 | 4678 | 4716 | 4432 | 4341 | 4062 | 4084 |
| 2011 | 3544 | 2936 | 3756 | 4099 | 4332 | 4352 | 4924 | 4795 | 4416 | 4242 | 4187 | |
| Part I Violent Crime* | | | | | | | | | | | | |
| | Jan | Feb | Mar | Apr | May | Jun | Jul | Aug | Sep | Oct | Nov | Dec |
| 2006 | 997 | 730 | 920 | 1030 | 1092 | 1082 | 1116 | 1122 | 1048 | 935 | 878 | 858 |
| 2007 | 794 | 707 | 940 | 955 | 1132 | 1013 | 947 | 977 | 1040 | 913 | 880 | 923 |
| 2008 | 769 | 698 | 861 | 957 | 1076 | 993 | 1055 | 938 | 1058 | 957 | 878 | 793 |
| 2009 | 784 | 640 | 862 | 942 | 953 | 928 | 1008 | 896 | 837 | 805 | 704 | 622 |
| 2010 | 577 | 463 | 696 | 759 | 865 | 771 | 846 | 752 | 751 | 696 | 606 | 621 |
| 2011 | 599 | 537 | 672 | 695 | 702 | 741 | 795 | 699 | 653 | 722 | 642 | |
| Part I Property Crime** | | | | | | | | | | | | |
| | Jan | Feb | Mar | Apr | May | Jun | Jul | Aug | Sep | Oct | Nov | Dec |
| 2006 | 4579 | 3537 | 4456 | 4652 | 5153 | 4664 | 5031 | 5385 | 5038 | 4798 | 4452 | 4402 |
| 2007 | 4126 | 3271 | 4254 | 4490 | 4851 | 4658 | 5238 | 4755 | 4318 | 4464 | 4362 | 4555 |
| 2008 | 4271 | 3446 | 4211 | 4561 | 4771 | 4550 | 4961 | 4680 | 4615 | 4562 | 4264 | 4146 |
| 2009 | 3735 | 3047 | 3790 | 4199 | 4233 | 3874 | 4374 | 4108 | 3888 | 3898 | 3574 | 3448 |
| 2010 | 2931 | 2507 | 3127 | 3511 | 3772 | 3811 | 3832 | 3964 | 3681 | 3645 | 3456 | 3463 |
| 2011 | 2945 | 2399 | 3084 | 3404 | 3630 | 3611 | 4129 | 4096 | 3763 | 3520 | 3545 | |

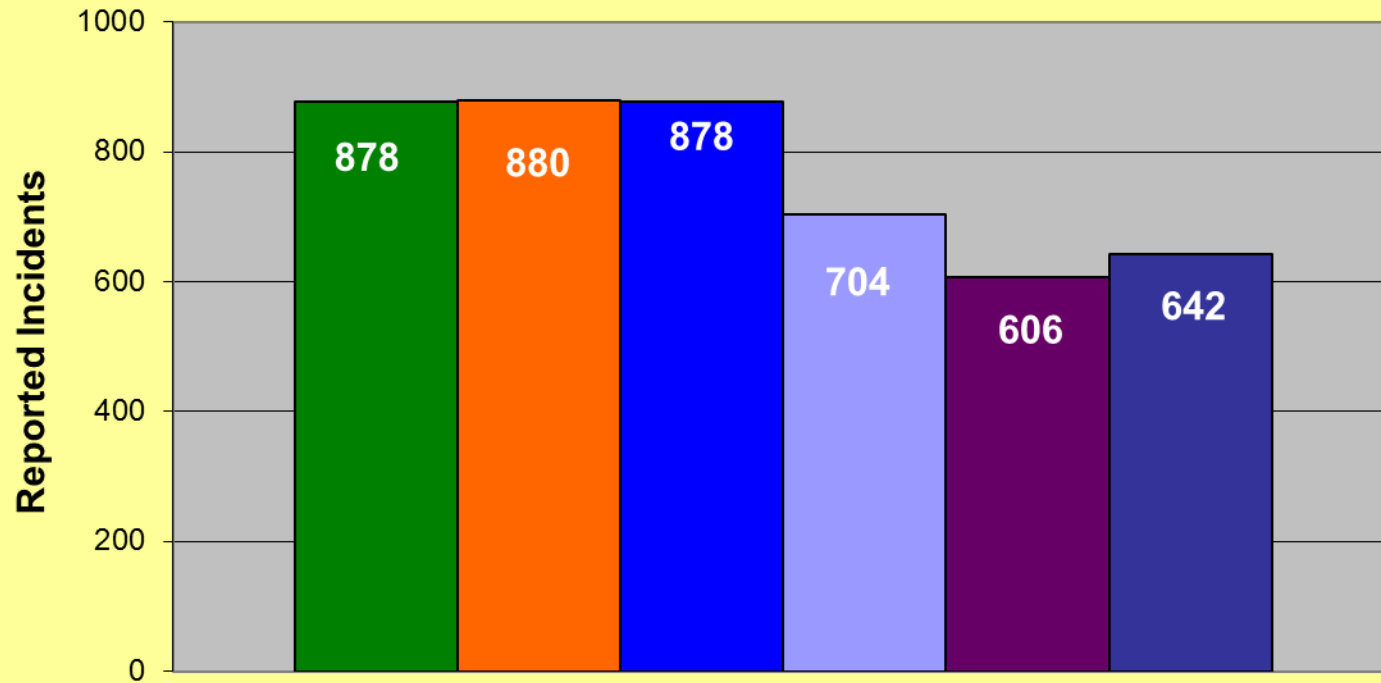
* Part I Violent Crimes reported in the FBI's Uniform Crime Reports are: Murder, Forcible Rape, Robbery, and Aggravated Assault.

** Part I Property Crimes reported in the FBI's Uniform Crime Reports are: Burglary, Larceny-Theft, and Motor Vehicle Theft.

**Memphis Police Department
Part I Crimes
November 2006/2007/2008/2009/2010/2011**



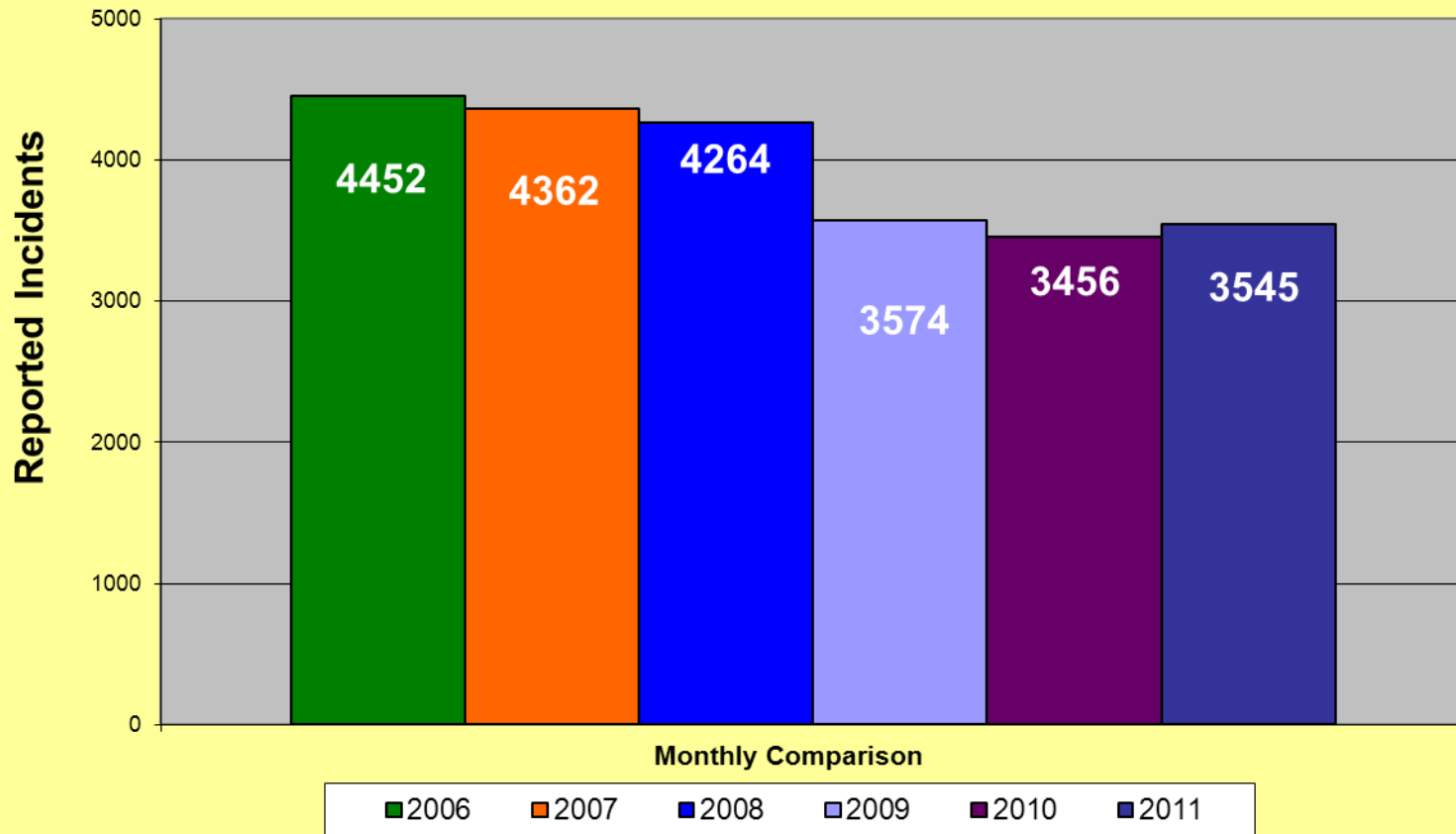
**Memphis Police Department
Part I Violent Crimes
November 2006/2007/2008/2009/2010/2011**



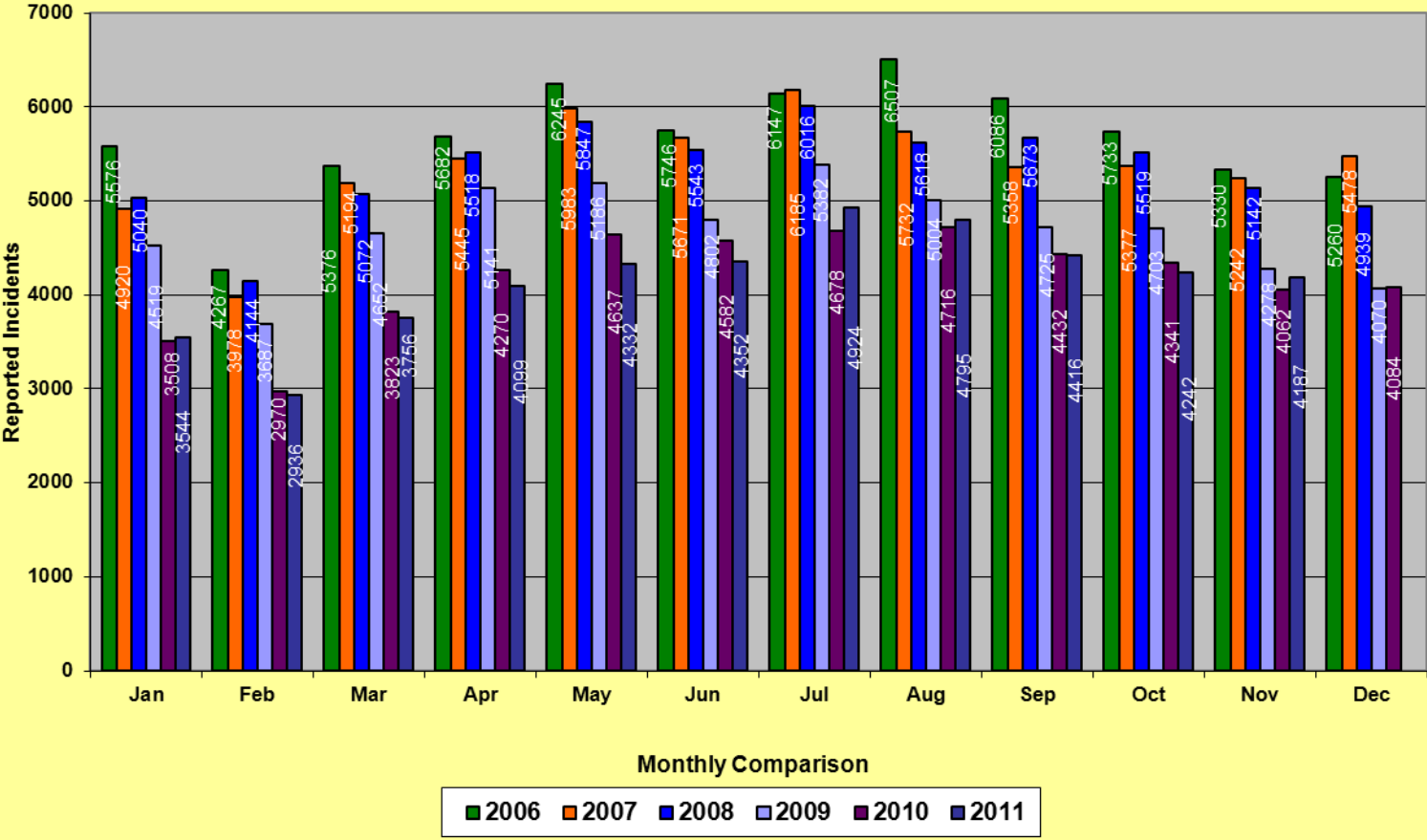
Monthly Comparison

■ 2006 ■ 2007 ■ 2008 ■ 2009 ■ 2010 ■ 2011

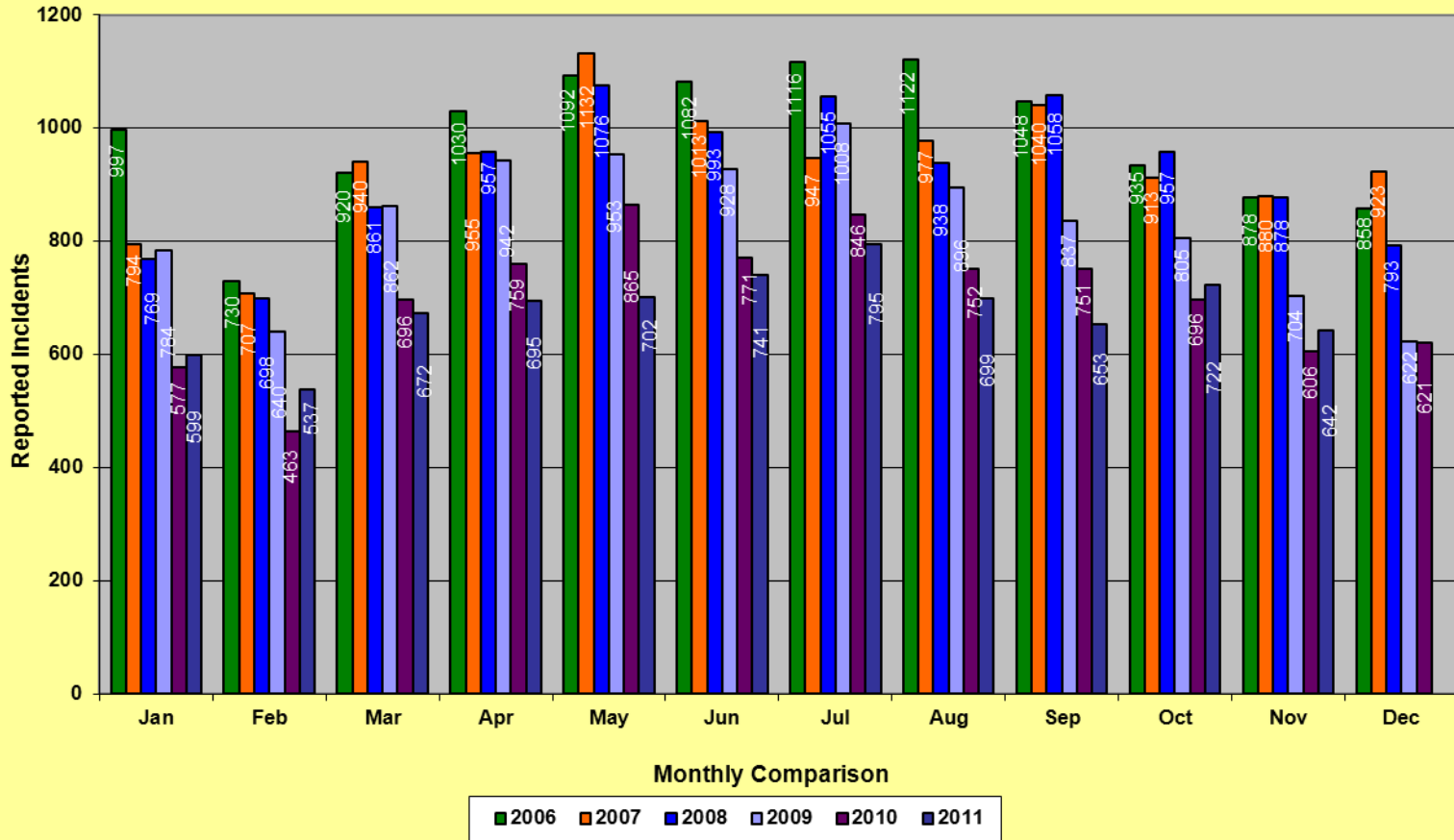
**Memphis Police Department
Part I Property Crime
November 2006/2007/2008/2009/2010/2011**



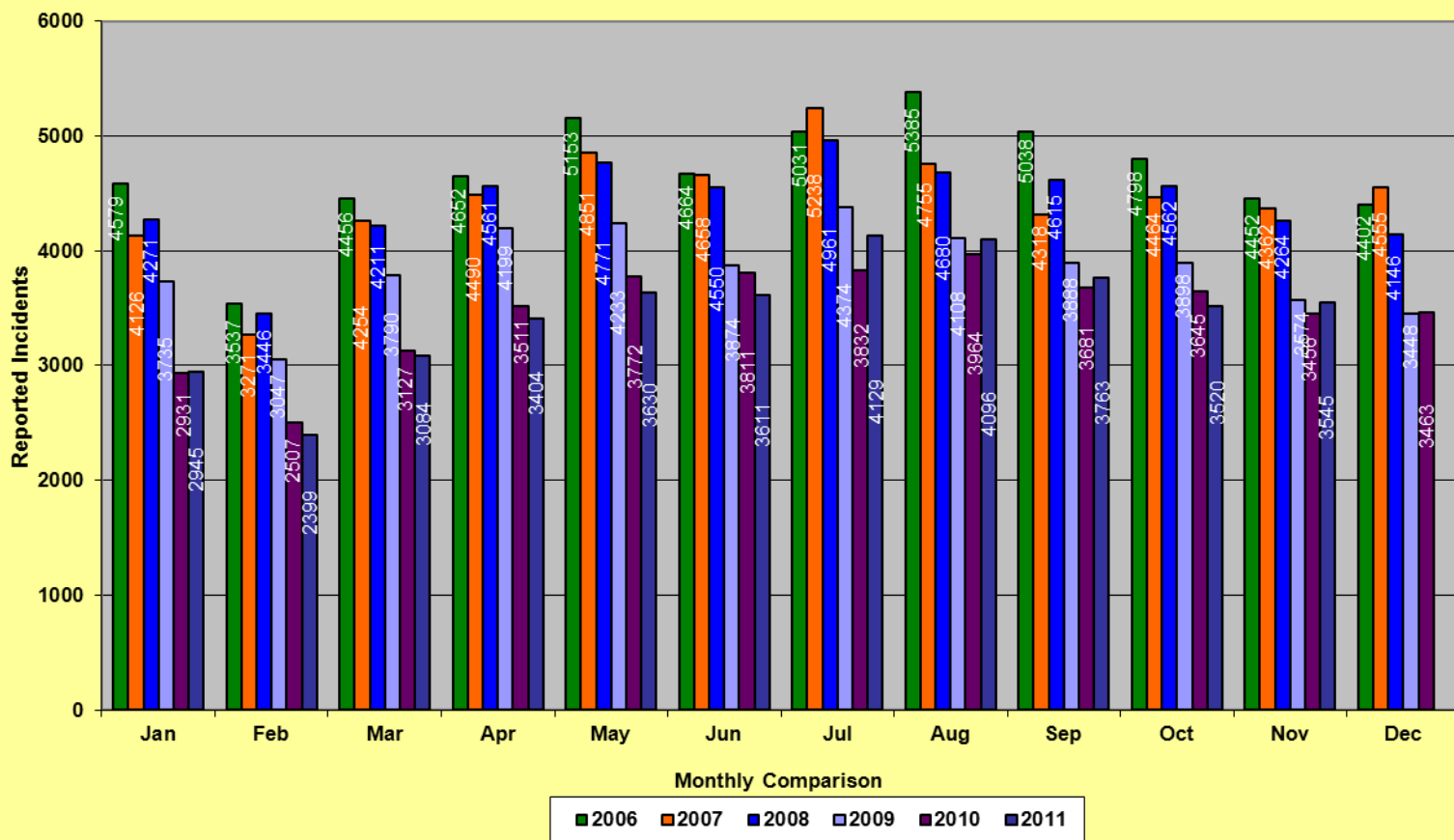
Memphis Police Department Part I Crimes Year to Date - 2006/2007/2008/2009/2010/2011



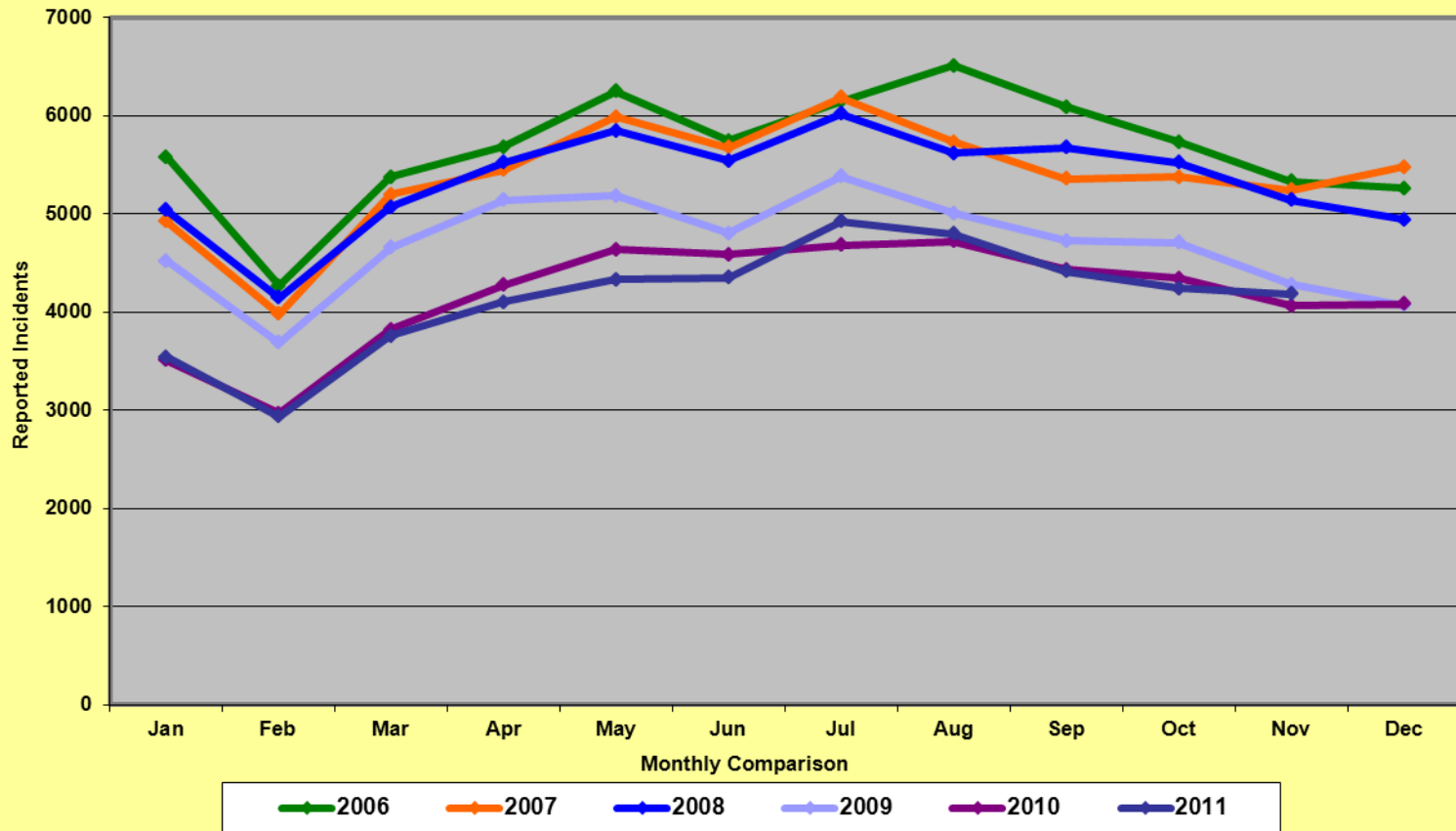
Memphis Police Department Part I Violent Crimes Year to Date - 2006/2007/2008/2009/2010/2011



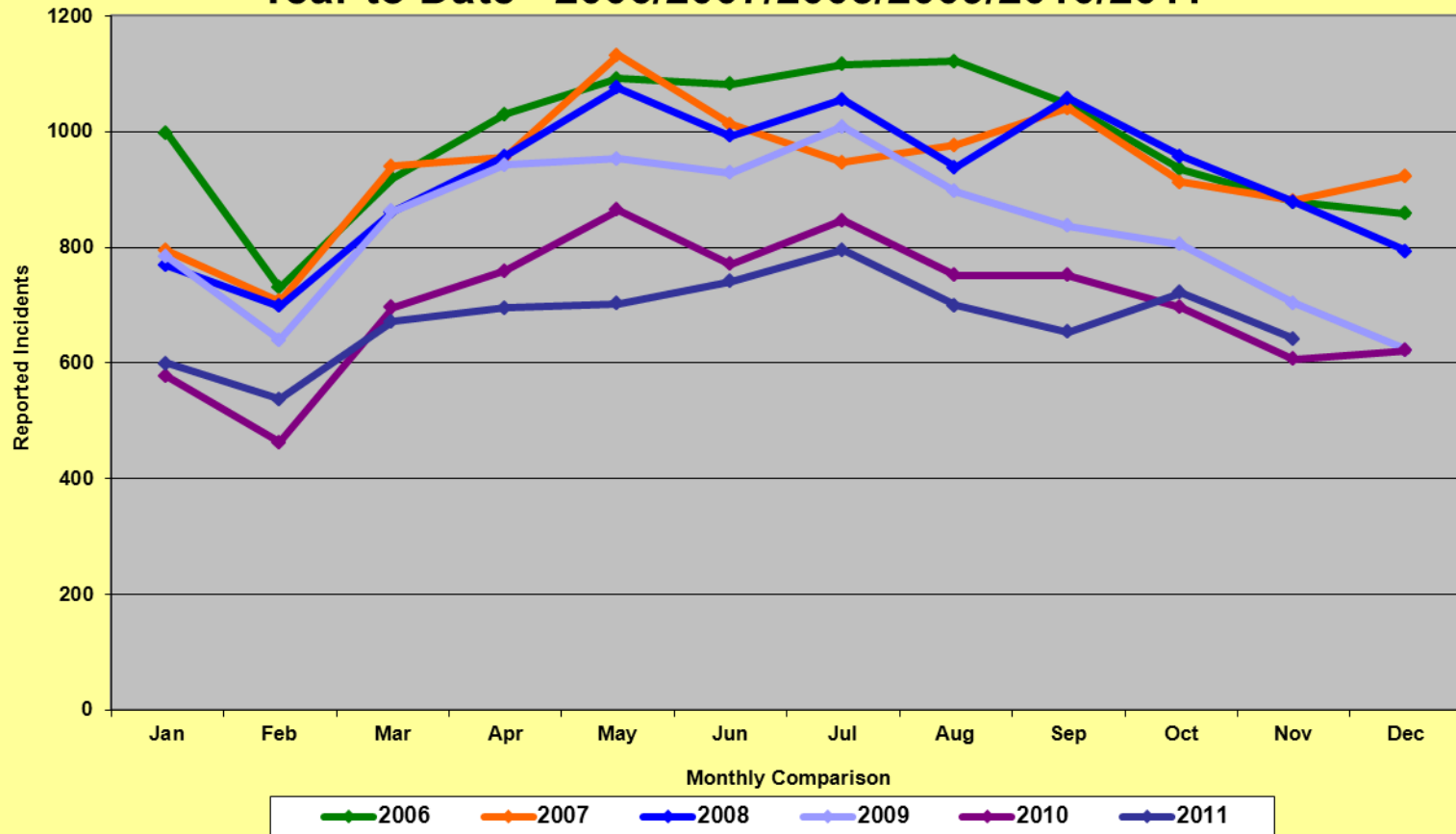
Memphis Police Department Part I Property Crimes Year to Date - 2006/2007/2008/2009/2010/2011



Memphis Police Department Part I Crimes Year to Date - 2006/2007/2008/2009/2010/2011



MemphisPolice Department Part 1 Violent Crimes Year to Date - 2006/2007/2008/2009/2010/2011



Memphis Police Department Part I Property Crimes Year to Date - 2006/2007/2008/2009/2010/2011

